

Volume 2, Issue 7

July 2011



**Project Spotlight:
'YMCA of Howard County'**

Address: Elliott City, MD
Areas Completed: 1,000 sqft.
Services: Saw Cut/Engrave,
Tintura Stain & Seal
Project Challenges: N/A



Tip Corner

- Play with the idea of concrete patterns & design-

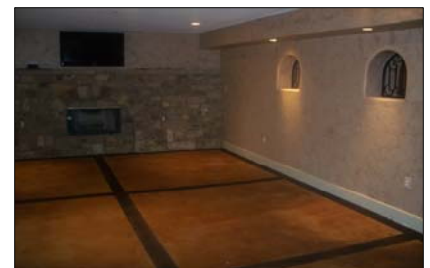
Concrete engraving is a specialized process which converts mundane existing concrete into a work of art. By staining and cutting a pattern into the surface, we can create a decorative, lasting alternative to popular flooring products, such as brick and tile.

We also offer a custom design service, providing endless possibilities for a truly unique design. The engraving process can be performed on most any concrete surface, both indoors and out for residential and commercial purposes.

BSI can also apply logos, should you want to personalize your home or market your business.



***Call us today
to schedule an
estimate!***



Referral Program

Attention all residences, if you refer another client to our services and BSI receives the signed contract from the person of referral. You will receive a \$100 gift card.

GO FROM GRAY... TO GORGEOUS
BSI Newsletter

"Service = The sum of many little things done well"